

## Dispersant spray system – KDSU-40 for beach, jetty and small boats



- Diesel driven spray set for application of dispersant on oil spills.
- The built-in pump allows for spraying both neat and dilute dispersant
- Spray arms (optional) are designed for use on vessels of opportunity and are easy to install.
- High-pressure diaphragm pump for optimum droplet size.
- Available in an electrically driven version for fixed installations

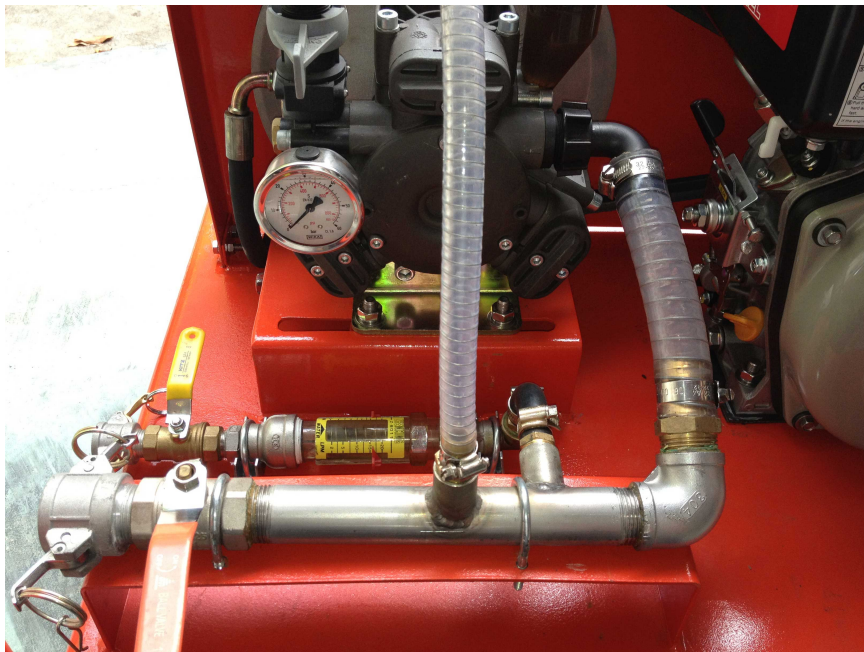
The KDSU-40 spray system comprises a diaphragm pump driven by a single cylinder air-cooled diesel engine, a set of 2 hand spray guns, a set of hoses to connect the pump with to the dispersant tank and the sea. On the pump set a flow control valve, a flowmeter and pressure gage are also installed

The system works either in dilute mode in which the pump suction (1") is from the sea and the 3/4" suction from the dispersant tank or in neat mode when the 1" suction is connected directly to the dispersant tank  
The pump capacity is 40l/min (2.4 m<sup>3</sup>/hour)



**KDSU-40 TECHNICAL SPECIFICATIONS**

<b>Technical data of diesel driven unit</b>	
Drive unit	Single cylinder, air cooled diesel engine, recoil start. Optionally equipped with spark arrestor. Output: 3 kW (4.1 hp) at 3000 rpm Alternative 3 kW electric motor, 3 x 440V/50hz complete with marine grade electric switch
Dispersant/water pump	Diaphragm pump, max rpm 550, V-belt driven by diesel engine or electric motor.
Capacity	Pump capacity is 40 l/min (2.4 m <sup>3</sup> /hour) at 550 rpm, max pressure 40 bar (pressure adjustment valve and pressure gauge are mounted on the manifold) Eductor suction of dispersant and mixing with seawater. Flowmeter for measuring of dispersant flow rate (0 – 40 l/min) Total volume 40 l/minute with up to 100% dispersant.
Spray guns	2 x High pressure spray guns are included as standard
Spray arms (optional)	Two spray arms each 3m, each with 2 nozzles are extra equipment – for mounting directly on the spray set and use on small boats
Hose set	Spray guns with 10m 3/8" hose each 1 x 5 m dispersant suction hose, 1 x 8 m 1" water suction hose
Pump set dimensions	1100 x 880 x 680mm 110 kg (equipped with wheels)



Eductor, flowmeter and flow controls

**EEXII-Manufacturing Sdn, Bhd**

No. 30 Jalan Bagan Nira, 26/8,  
Hicom Industrial Park, Section 26, 40000 Shah Alam

Tel: 603-5192 2913

Email : [sales@eexii-manufacturing.com](mailto:sales@eexii-manufacturing.com)